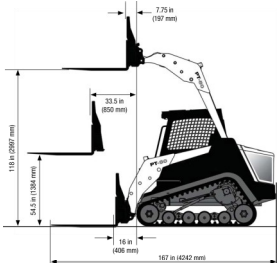


ASV POSI TRACK PT80



PT80 Rubber Track Loader



Multi-level suspension for exceptional traction and operator comfort. Easy operation with pilot operated joystick controls and comfortable easy access operator station. Two-speed hydrostatic drive system offers fast travel speed and high torque work speed. Standard auxiliary hydraulics and hydraulic quick coupler attach easily to a wide range of industry standard attachments.

Specifications

Operating Specifications (standard equipment)		Auxiliary Hydraulic System	
Operating weight	8,972 lb (4070 kg)	Pump capacity	Low: Variable from 0-17.4 gpm (65.0 lpm) High: 30 gpm (113.6 lpm)
Shipping weight	8,060 lb (3656 kg)	System pressure, max.	3,000 psi (20 670 kPa)
Ground pressure @ operating weight	3.5 psi (24.1 kPa)	Controls	Intermittent via joystick button or continuous via console switch, mode selectable via dash-mounted switch
Tipping load	6,200 lb (2812 kg)	Couplers	Push-to-connect quick couplers mounted on loader arms. Pressure relief valve mounted to coupler block.
Operating capacity, 50% tipping load	3,100 lb (1406 kg)	Cooling system	High efficiency side-by-side radiator and oil cooler
Operating capacity, 35% tipping load	2,170 lb (984 kg)		
Travel speed, low range	0-7 mph (11 kph)		
Travel speed, high range	0-12.5 mph (20 kph)		

Engine

Type	Diesel, 4-cylinder, turbocharged
Model	Perkins 804D-33T
Displacement	202 in ³ (3.3 L)
Gross power rating @ 2800 rpm	83 hp (62 kW)
Torque, peak	195.5 lb-ft (265 Nm)
Cooling system	Engine-driven fan and coolant/anti-freeze-filled radiator
Engine block heater	Standard, AC plug-in type
Intake air cleaner	Dual stage
Emission controls	Meets all U.S. EPA Tier 3 standards

Electrical System

Nominal charge	12 V
Battery	950 CCA
Charging system	90 amp alternator
Outlets	1-12 V port inside operator station
Wiring	Pre-wired for all factory-available accessories

Operator Station

Seat:	Adjustable contour vinyl seat with built-in operator presence switch, lap bar and 3-inch (76 mm) wide seat belt.
Loader Control:	Right-hand pilot hydraulic joystick controls loader lift/lower and tilt, plus intermittent control of auxiliary hydraulic.
Drive Control:	Left-hand pilot hydraulic joystick controls machine speed and direction.
Engine speed	Foot pedal
Indicators/gauges	Engine oil low-pressure light Hydraulic oil high-temperature light Engine high-temperature light Low battery voltage light Tachometer Hour meter Fuel gauge
ROPS meets	SAE J1040 MAY94, ISO 3471:1994
FOPS meets	SAE J1043 SEPT87, ISO 3449:1992
Illumination	4 - Fixed forward-facing halogen lights 1 - Adjustable rear-facing halogen light 1 - Interior light
Convenience	12 V power port

Undercarriage

Track Type:	General purpose track constructed of rubber compound with embedded co-polymer cords and all-purpose treads. Three rows of track drive lugs molded in. Turf Track with smooth tread available as an option.
Track width	Standard - 18 in (457 mm); Optional - 20 in (508 mm)
Length of track on ground	71 in (1803 mm)
Ground contact area	2,556 in ² (1.65m ²)
Ground contact area, optional track	2,840 in ² (1.83 m ²)
Drive system	Two hydrostatic direct drive sprockets controlled by a single joystick
Track drive sprocket	Elevated with low friction, replaceable sprocket rollers
Undercarriage suspension	Two independent torsion axles per undercarriage
Roller Wheels:	24 high-density polyurethane and rubber wheels per track. Wheel bearings protected by metal-faced seals.
Roller wheel diameter	Front wheels - 15 in (381 mm) Other wheels - 10 in (254 mm)

Service Capacities

Fuel tank	18 gal (68 L)
Hydraulic tank	21 gal (79 L)
Engine coolant/antifreeze	3 gal (12 L)
Engine oil, including filter	9 quarts (8.52 L)

Dimensions:

