

BOBCAT 430



Specifications

Performance	430 Standard Arm	430 Extendable Arm Retracted	430 Extendable Arm Extended
Operating Weight	8024 lb. (3640 kg)	8662 lb. (3930 kg)	8662 lb. (3930 kg)
Travel Speed			
Low	2.6 mph (4.2 km/h)	2.6 mph (4.2 km/h)	2.6 mph (4.2 km/h)
High	5.0 mph (8.0 km/h)	5.0 mph (8.0 km/h)	5.0 mph (8.0 km/h)
Hydraulic Pumps			
Type	Piston w/gear	Piston w/gear	Piston w/gear
Total Capacity	24 gpm (90.9 L/m)	24 gpm (90.9 L/m)	24 gpm (90.9 L/m)
Auxiliary Flow	16.4 gpm (62.1 L/m)	16.4 gpm (62.1 L/m)	16.4 gpm (62.1 L/m)
Track Shoes	Rubber (steel optional)	Rubber (steel optional)	Rubber (steel optional)
Width	12.6 in. (320 mm)	12.6 in. (320 mm)	12.6 in. (320 mm)
Ground Pressure	4.21 psi (29.0 kPa)	4.54 psi (31.3 kPa)	4.54 psi (31.3 kPa)
Overall Machine Width	70.1 in. (1780 mm)	70.1 in. (1780 mm)	70.1 in. (1780 mm)

Working Range

Arm Length	47.2 in. (1200 mm)	47.1 in. (1195 mm)	79.5 in. (2019 mm)
Max. Digging Height	180 in. (4571 mm)	176.8 in. (4490 mm)	189.5 in. (4812 mm)
Max. Dump Height	123 in. (3125 mm)	122.5 in. (3112 mm)	135.2 in. (3434 mm)
Max. Digging Depth	120.7 in. (3066 mm)	120.5 in. (3062 mm)	152.7 in. (3878 mm)
Max. Vertical Wall	85.6 in. (2175 mm)	74.7 in. (1897 mm)	106.9 in. (2714 mm)
Max. Reach at			
Ground Level	200.7 in. (5097 mm)	200.6 in. (5096 mm)	230.1 in. (5846 mm)
Arm Breakout Force	3860 lbf. (17170 N)	3860 lbf. (17170 N)	2678 lbf. (11912 N)
Bucket Breakout Force	6889 lbf. (30644 N)	6889 lbf. (30644 N)	6889 lbf. (30644 N)

Engine

Make / Model	Kubota V2203-M-DI-E2B-BC1
Fuel / Cooling	Diesel / Liquid
Cylinders / Displacement	Four / 134 cu.in. (2.2 L)
Horsepower / RPM	42.8 hp (31.9 kW) @ 2400 rpm

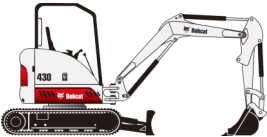
Capacities

Fuel Tank	17.8 gal. (67.4 L)
Hydraulic System	13.5 gal. (51.1 L)
Hydraulic Reservoir	9.7 gal. (36.7 L)
Cooling System	9.5 gal. (36 L)

Drive/Swing System

Track Tensioning System	Grease cylinder / Coil spring
Swing Speed	9.1 rpm
Swing Clearance, Rear	34.7 in. (881 mm) (Zero Tail Swing)
Boom Swing	
Left	90°
Right	50°

BOBCAT 430 Mini Excavator



The Bobcat 430 and 435 are the world's first compact excavators with Zero House Swing (ZHS) and the FastTrack drive system — and they're ready to take on the biggest challenges you can throw at them!

Dimensions:

