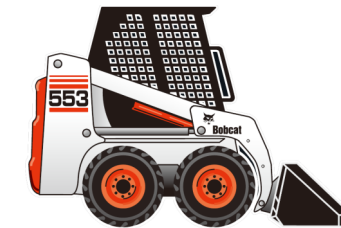


SOUTHERN
TOOL + EQUIPMENT



It weighs only 3,704 pounds for easy trailering. With a travel speed up to 6.4 mph, you'll get your longer-run jobs done faster. And this peppy 553 loader is also better balanced for greater work efficiency.

Performance

553

Dimensions

107.3 in. (2725 mm)
49.4 in. (1255 mm)
72.5 in. (1842 mm)
103.7 in. (2634 mm)

Engine

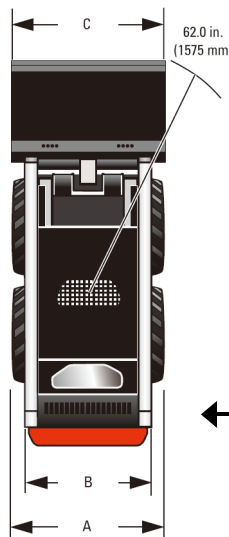
D1105-B
Diesel/Liquid
3
25/68.5 cu.-in. (1,1 L)
10 gal. (38 L)

Operation

Forward, reverse, travel speed and steering controlled by two hand levers.
Raise/lower lift arms and dump/rollback bucket controlled by two foot pedals.
Hydrostatic, four-wheel drive.

Standard Features

Adjustable Cushion Seat	Meters/Gauges/
Bobcat Interlock Control	Warning Lights
System (BICS™)	Operator Cab
Bob-Tach	Parking Brake
Tires: 27 x 8.50-15	Rear Window
Front & Rear Lights	Rocker Switch Activated
Front Auxiliary	Glow Plugs
Hydraulics	Seat Bar
Lift Arm Support	Seat Belt
	Spark Arresting System



A. 27 x 8.50 – 15 Tires – 47.0" (1194 mm)
B. 27 x 8.50 – 15 Tires – 38.2" (970 mm)
C. 48 in. Bucket Width – 49.4" (1255 mm)