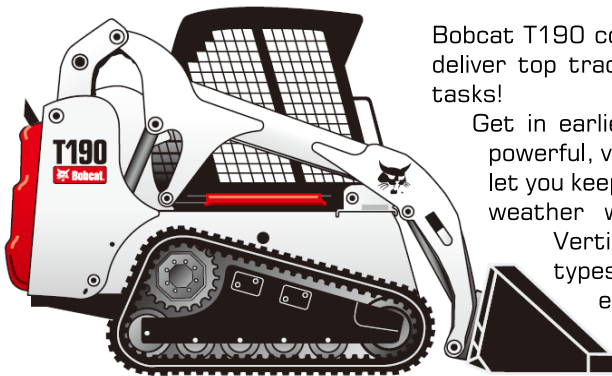




T190 Compact Track Loader



Bobcat T190 compact tracked loaders deliver top traction for your toughest tasks!

Get in earlier...finish faster! These powerful, versatile tracked loaders let you keep working even when the weather won't cooperate! With Vertical Lift Path to suit all types of jobs, and even more effectively with Lifting, carrying and loading trucks.

Specifications

Loader	T190	Control Options	
Loader Series	K-Series	Bobcat Standard (foot pedals/steering levers)	Std
Rated Operating Capacity (ROC) (35% of Tipping Load)	1900 lb. (862 kg)	Advance Control System (ACS)	Opt
ROC with Counterweight (optional)		Selectable Joystick Control (SJC)	Opt
Operating Capacity at 50% of Tipping Load	3642 lb. (1652 kg)	Radio Remote Control (SJC Required)	Opt
Tipping Load	7283 lb. (3304 kg)	<b>Machine Features</b>	
ROC w/opt Roller Suspension	1900 lb. (862 kg)	Air Ride Seat	Opt
ROC w/opt Steel Track Undercarriage	-	Back-up Alarm & Horn	Std
Height to Hinge Pin	118.2 in (3002 mm)	Bobcat Interlock Control System (BICS™)	Std
Lift Arm Path	Vertical	Cab with Heat	Opt
<b>Size and Speed</b>		Cab with Heat & Air Conditioning	Opt
Operating Weight	7775 lb. (3527 kg)	Deluxe Instrumentation (includes Keyless Start)	Opt
Bucket Width	68 in. (1727 mm)	Hydraulic Bucket Positioning	Opt
Cab Height	76.3 in. (1938 mm)	Mechanical Suspension Seat	Std
Travel Speed	7.3 mph (11.7 km/hr.)	Front and Rear Work Lights	Std
<b>Engine</b>	Interim Tier IV Compliant	Radio	Opt
Horsepower	66 hp	Ride Control	Opt
Type	Turbo Diesel	ROPS/FOPS Approved Cab Structure	Std
Fuel Tank Capacity	28 gal. (106 L)	Sound Reduction Package	Opt
Horsepower Management		<b>Features for Attachments</b>	
<b>Uptime Protection</b>		Attachment Control Kit	Opt
Bobcat SmartFAN™	Std	Bob-Tach™ Mounting System	Std
Dual Path Cooling System	Std	Power Bob-Tach™	Opt
Machine Shutdown Protection	Std	Fingertip Auxiliary Hydraulics Control	Std
<b>Tracks/Undercarriage</b>		Hydraulic System Pressure	3300 psi
Track Width-Standard	12.6 in. (320 mm)	Hydraulic Standard Flow	16.9 gpm (64 L/min.)
Track Width-Optional	15.8 in. (400 mm)	Hydraulic High Flow (optional)	26.4 gpm (100 L/min.)
Ground Pressure (w/std tracks)	5 psi	Pressure Release Hydraulic Quick Couplers	Std
Ground Pressure (w/opt tracks)	4.2 psi	Speed Management	
Length of Track on Ground	55.2 in. (1401 mm)		
Roller Suspension	Opt		
Grease Cylinder Track Tensioning	Std		
Triple Flange Rollers per side	4		

Dimensions:

