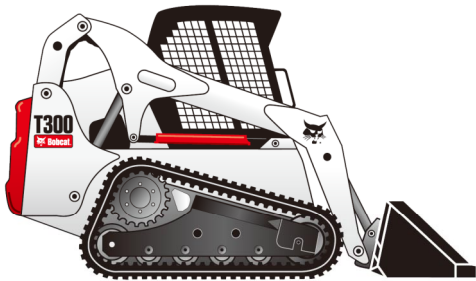




T300 Compact Track Loader

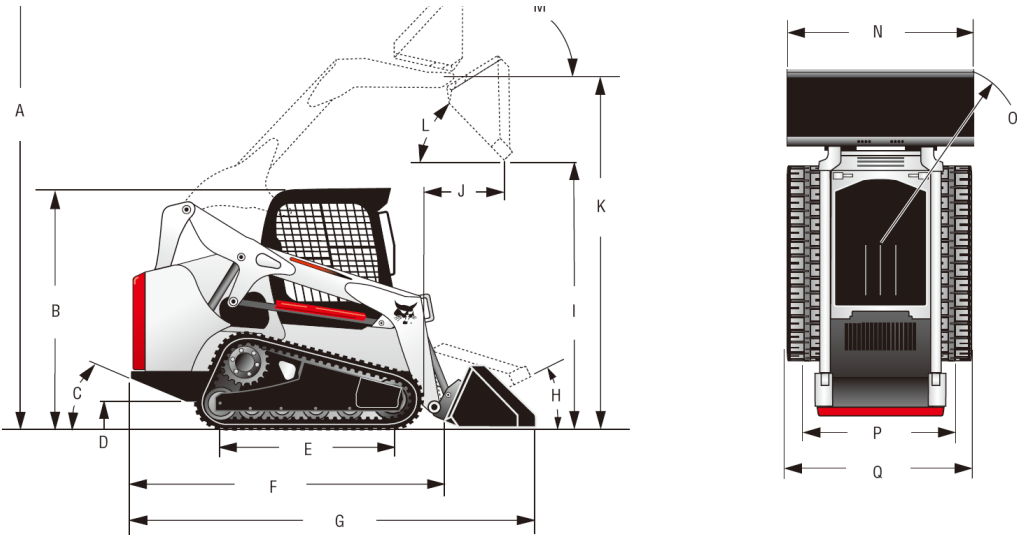


The mast of just about every task, the powerful K-Series T300 tops the field when it comes to making easy work of the toughest jobs. The vertical lift path, with its hefty lifting capacity, makes loading trucks a snap. Optional high-flow hydraulics keep hydraulic attachments operating at peak production. All this plus great floatation and superior operator comfort gives you unbeatable performance and value.

Specifications

Loader	T320	Control Options	
Loader Series	K-Series	Bobcat Standard (foot pedals/steering levers)	Std
Rated Operating Capacity (ROC) (35% of Tipping Load)	3100 lb. 1406 kg)	Advance Control System (ACS)	Opt
ROC with Counterweight (optional)	loader.	Selectable Joystick Control (SJC)	Opt
Operating Capacity at 50% of Tipping Load	4604 lb. (2089 kg)	Radio Remote Control (SJC Required)	Opt
Tipping Load	9208 lb. (4177 kg)	Machine Features	
ROC w/opt Roller Suspension	2800 lb. (1270 kg)	Air Ride Seat	Opt
ROC w/opt Steel Track Undercarriage	2700 lb. (1224 kg)	Back-up Alarm & Horn	Std
Height to Hinge Pin	128.4 in. (3261 mm)	Bobcat Interlock Control System (BICS™)	Std
Lift Arm Path	Vertical	Cab with Heat	Opt
Size and Speed		Cab with Heat & Air Conditioning	Opt
Operating Weight	9702 lb. (4401 kg)	Deluxe Instrumentation (includes Keyless Start)	Opt
Bucket Width	80 in. (2032 mm)	Hydraulic Bucket Positioning	Opt
Cab Height	80.9 in. (2055 mm)	Mechanical Suspension Seat	Std
Travel Speed	6.6 mph (10.6 km/hr.)	Front and Rear Work Lights	Std
Engine	Interim Tier II Compliant	Radio	Opt
Horsepower	92 hp	Ride Control	Opt
Type	Turbo Diesel	ROPS/FOPS Approved Cab Structure	Std
Fuel Tank Capacity	26 gal. (98.4 L)	Sound Reduction Package	Opt
Horsepower Management		Features for Attachments	
Uptime Protection		Attachment Control Kit	Opt
Bobcat SmartFAN™	Std	Bob-Tach™ Mounting System	Std
Dual Path Cooling System	Std	Power Bob-Tach™	Opt
Machine Shutdown Protection	Std	Fingertip Auxiliary Hydraulics Control	Std
Tracks/Undercarriage		Hydraulic System Pressure	3300 psi
Track Width-Standard	17.7 in. (450 mm)	Hydraulic Standard Flow	21.2 gpm (80 L/min.)
Track Width-Optional	12.6 in. (320 mm)	Hydraulic High Flow (optional)	37 gpm (140 L/min.)
Ground Pressure (w/std tracks)	3.9 psi	Pressure Release Hydraulic Quick Couplers	Std
Ground Pressure (w/opt tracks)	5.4 psi	Speed Management	
Length of Track on Ground	63.7 in. (1618 mm)		
Roller Suspension	Opt		
Grease Cylinder Track Tensioning	Std		
Triple Flange Rollers per side	5		

Dimensions:



DIMENSIONS Inches (mm)															
	A	B	C	D	E	F	G	H	I	J	K	L	M	N	O
T300	160.6 (4079)	80.9 (2055)	34°	9.6 (244)	63.7 (1618)	114.9 (2918)	142.9 (3630)	30°	99.1 (2517)	128.8 (3272)	36.5 (927)	42" (1067)	96"	80 (2032)	84.2 (2139)

