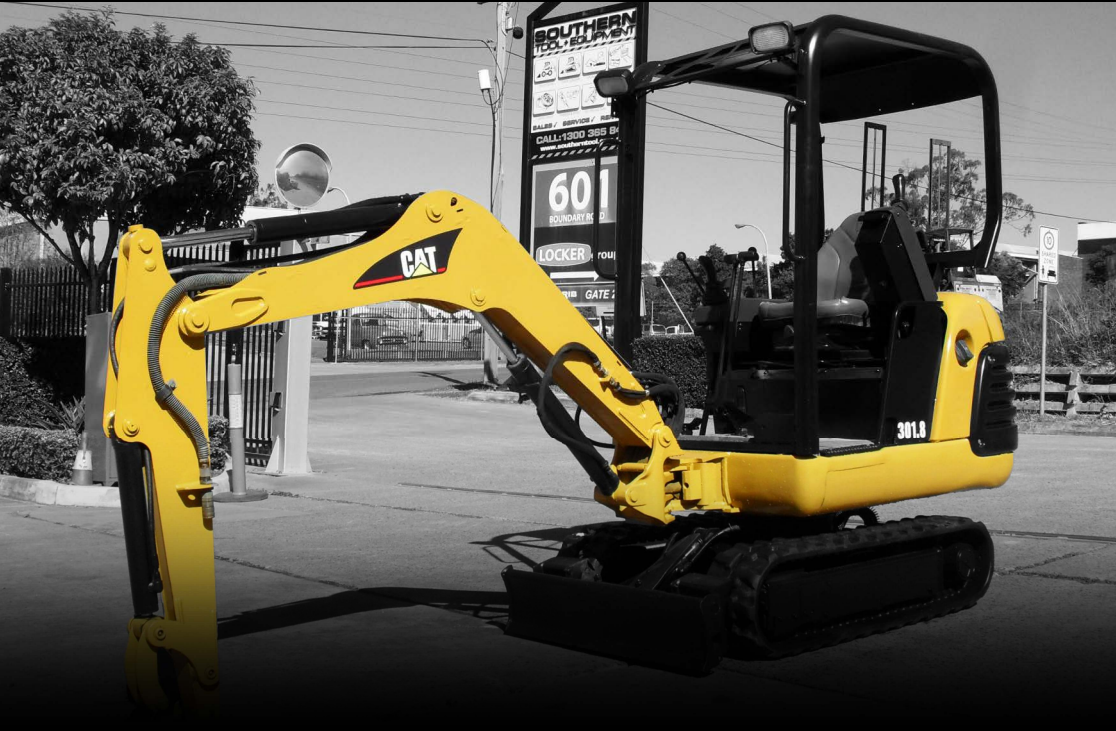


# CATERPILLAR 301.8



## CATERPILLAR 301.8 Excavator

301.8C offer spacious and comfortable work areas with expansive legroom. With High dig forces, fast cycle times and high bucket rotation angles deliver the productivity that customers demand.

### Specifications

#### PERFORMANCE

|                                  |         |
|----------------------------------|---------|
| Machine Weight [KG]              | 1680    |
| Unit swing speed [rpm]           | 10.5    |
| Max. digging height [mm]         | 3350    |
| Max. dumping height [mm]         | 2360    |
| Max. digging depth [mm]          | 2080    |
| Max. vertical digging depth [mm] | 1620    |
| Boom Swing Angle [Left / Right]  | 54 / 50 |

#### DIMENSIONS

|                   |                            |
|-------------------|----------------------------|
| Overall [mm]      | 3695[L] x 2190[H] x 980[W] |
|                   | 1340[W] Extended           |
| Dozer Blade [mm]  | 980 (1340) x 250           |
| Track Length [mm] | 1575                       |
| Shoe Width [mm]   | 230                        |

#### ENGINE

|                   |                               |
|-------------------|-------------------------------|
| Model             | Caterpillar 3-cylinder Diesel |
| Displacement [L]  | 0.95                          |
| Rated Output [HP] | 19                            |
| Fuel tank [L]     | 22.0                          |

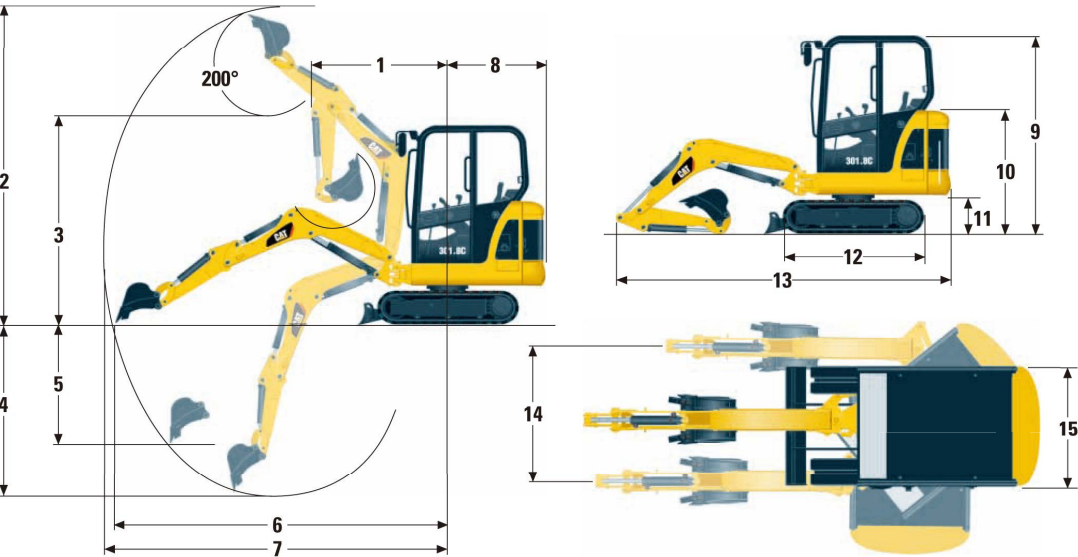
#### HYDRAULIC SYSTEM

|                        |                              |
|------------------------|------------------------------|
| Hydraulic Flow [L/min] | 34.4 Primary, 14.6 Secondary |
|------------------------|------------------------------|

#### UNDERCARRIAGE

|                       |           |
|-----------------------|-----------|
| Ground Pressure [kPa] | 24.5      |
| Travel Speed [km/h]   | 2.0 / 4.5 |

### Dimensions:



### Dimensions:

|            |             |            |             |             |            |            |            |
|------------|-------------|------------|-------------|-------------|------------|------------|------------|
| 1: 1550 mm | 2: 3350 mm  | 3: 2360 mm | 4: 2080 mm  | 5: 1620 mm  | 6: 3610 mm | 7: 3700 mm | 8: 1090 mm |
| 9: 2190 mm | 10: 1365 mm | 11: 435 mm | 12: 1575 mm | 13: 3695 mm | 14: 975 mm | 15: 980 mm |            |

